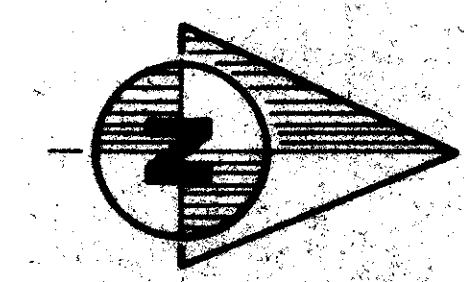


This plat was filed for record
at M. this day of
recorded in Plat Book No.
on page

JOHN B. DUNKLE, Clerk
Circuit Court
BY _____, D.C.

31



A PLANNED UNIT DEVELOPMENT VISTA DEL GOLF AT BOCA LAGO

BEING A REPLAT OF A PART OF THE REPLAT OF BOCA LAGO,
AS RECORDED IN PLAT BOOK 31, PAGES 62 THRU 71,
INCLUSIVE, PUBLIC RECORDS, PALM BEACH COUNTY, FLORIDA.

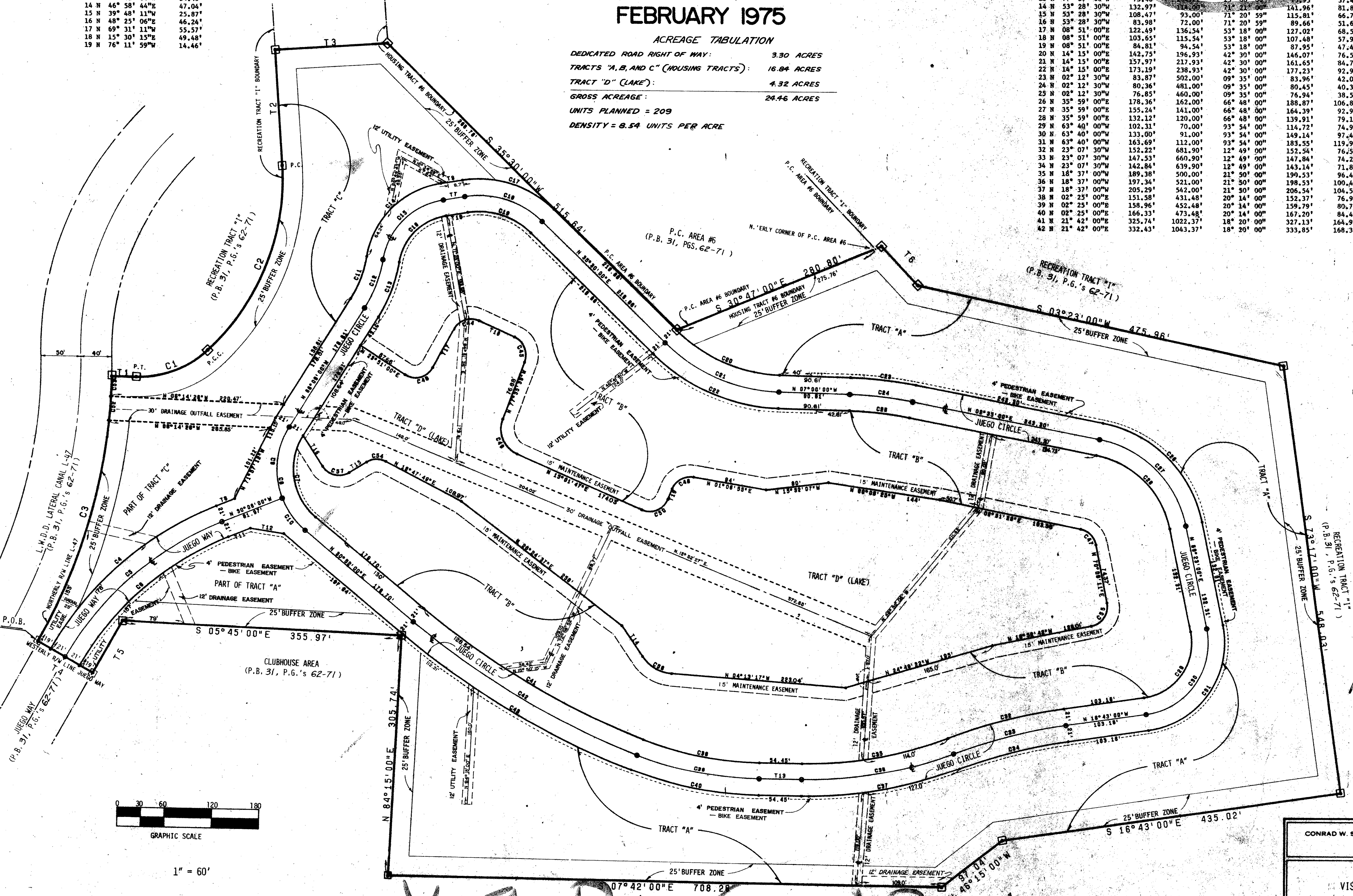
FEBRUARY 1975

ACREAGE TABULATION

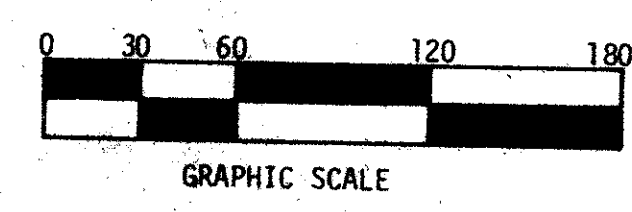
DEDICATED ROAD RIGHT OF WAY:	3.30 ACRES
TRACTS "A, B, AND C" (HOUSING TRACTS):	16.84 ACRES
TRACT "D" (LAKE):	4.32 ACRES
GROSS ACREAGE:	24.46 ACRES
UNITS PLANNED = 209	
DENSITY = 8.54 UNITS PER ACRE	

(CURVE TABLE - C.NOS)					
CHORD BEARING	CHORD DISTANCE	RADIUS	CENTRAL ANGLE	ARC	TAN
1 N 29° 05' 00"W	96.34'	129.30'	49° 10' 00"	96.70'	51.88'
2 N 76° 33' 30"W	252.35'	312.22'	51° 21' 00"	140.00'	140.00'
3 N 83° 07' 30"W	348.45'	412.28'	28° 10' 00"	352.80'	179.68'
4 N 49° 32' 00"W	278.09'	417.92'	38° 52' 00"	283.50'	147.45'
5 N 49° 32' 00"W	264.12'	396.92'	38° 52' 00"	269.25'	140.04'
6 N 49° 32' 00"W	250.14'	375.97'	38° 52' 00"	255.01'	132.63'
7 N 72° 21' 30"E	104.68'	79.00'	82° 59' 00"	114.42'	69.87'
8 N 72° 21' 30"E	132.50'	100.00'	82° 59' 00"	144.83'	88.45'
9 N 86° 52' 30"E	90.72'	100.00'	50° 57' 00"	94.16'	50.90'
10 N 45° 23' 00"E	50.13'	100.00'	29° 02' 00"	50.67'	25.89'
11 N 77° 39' 00"W	56.78'	142.22'	23° 00' 00"	57.09'	28.94'
12 N 77° 39' 00"W	65.08'	163.22'	23° 00' 00"	65.52'	33.21'
13 N 77° 39' 00"W	73.46'	184.22'	23° 00' 00"	73.90'	37.48'
14 N 53° 28' 30"W	132.97'	123.00'	71° 21' 00"	141.96'	81.84'
15 N 53° 28' 30"W	108.47'	93.00'	71° 20' 59"	115.81'	66.77'
16 N 53° 28' 30"W	83.98'	72.00'	71° 20' 59"	89.66'	51.69'
17 N 08° 51' 00"E	122.49'	136.54'	53° 18' 00"	127.02'	68.52'
18 N 08° 51' 00"E	103.65'	115.54'	53° 18' 00"	107.48'	57.98'
19 N 08° 51' 00"E	84.81'	94.54'	53° 18' 00"	87.95'	47.45'
20 N 14° 15' 00"E	142.75'	196.93'	42° 30' 00"	146.07'	76.58'
21 N 14° 15' 00"E	157.97'	217.93'	42° 30' 00"	161.65'	84.75'
22 N 14° 15' 00"E	173.19'	238.93'	42° 30' 00"	177.23'	92.91'
23 N 02° 12' 30"W	83.87'	552.00'	09° 35' 00"	83.96'	42.08'
24 N 02° 12' 30"W	80.36'	481.00'	09° 35' 00"	80.45'	40.32'
25 N 02° 12' 30"W	76.85'	460.00'	09° 35' 00"	76.94'	38.56'
26 N 35° 59' 00"E	178.36'	162.00'	66° 48' 00"	188.87'	106.82'
27 N 35° 59' 00"E	135.24'	141.00'	66° 48' 00"	144.39'	82.97'
28 N 35° 59' 00"E	132.12'	120.00'	66° 48' 00"	139.91'	79.13'
29 N 63° 40' 00"W	102.31'	70.00'	93° 54' 00"	114.72'	74.93'
30 N 63° 40' 00"W	133.00'	91.00'	93° 54' 00"	149.14'	97.41'
31 N 63° 40' 00"W	163.69'	112.00'	93° 54' 00"	183.55'	119.90'
32 N 23° 07' 30"W	152.22'	681.90'	12° 49' 00"	152.54'	76.59'
33 N 23° 07' 30"W	147.53'	660.90'	12° 49' 00"	147.84'	74.23'
34 N 23° 07' 30"W	142.84'	639.90'	12° 49' 00"	143.14'	71.87'
35 N 18° 37' 00"W	189.38'	500.00'	21° 50' 00"	199.53'	96.44'
36 N 18° 37' 00"W	197.34'	521.00'	21° 50' 00"	206.54'	104.54'
37 N 18° 37' 00"W	205.29'	542.00'	21° 50' 00"	212.37'	106.99'
38 N 02° 25' 00"E	151.58'	431.48'	20° 14' 00"	152.37'	76.99'
39 N 02° 25' 00"E	158.96'	452.48'	20° 14' 00"	159.79'	80.73'
40 N 02° 25' 00"E	166.33'	473.48'	20° 14' 00"	167.20'	84.48'
41 N 21° 42' 00"E	325.74'	1022.37'	18° 20' 00"	327.13'	164.98'
42 N 21° 42' 00"E	332.43'	1043.37'	18° 20' 00"	333.85'	168.37'

(TAN TABLE - T.NOS)		
BEARING	DISTANCE	TAN
1 N 07° 17' 00"W	31.14'	
2 S 77° 46' 00"W	145.28'	
3 N 12° 14' 00"W	143.65'	
4 N 21° 02' 00"E	80.00'	
5 N 68° 58' 00"W	76.50'	
6 N 37° 46' 00"E	67.96'	
7 N 17° 48' 00"W	27.90'	
8 N 30° 06' 00"W	25.00'	
9 N 17° 48' 00"W	27.90'	
10 N 17° 48' 00"W	27.90'	
11 N 30° 06' 00"W	30.24'	
12 N 00° 23' 00"E	43.09'	
13 N 07° 42' 00"W	54.45'	
14 N 46° 58' 44"E	47.04'	
15 N 39° 48' 11"W	25.87'	
16 N 48° 25' 06"E	46.24'	
17 N 69° 31' 11"W	55.57'	
18 N 15° 30' 15"E	49.48'	
19 N 76° 11' 59"W	14.46'	



(CURVE TABLE - C.NOS)					
CHORD BEARING	CHORD DISTANCE	RADIUS	CENTRAL ANGLE	ARC	TAN
43 N 21° 42' 00"E	139.12'	1064.31'	18° 20' 00"	140.47'	77.17'
44 N 21° 42' 00"E	145.00'	1123.28'	18° 20' 00"	146.49'	81.22'
45 N 21° 42' 00"E	150.88'	1182.25'	18° 20' 00"	152.50'	85.27'
46 N 21° 42' 00"E	156.76'	1241.22'	18° 20' 00"	158.51'	89.32'
47 N 21° 42' 00"E	162.64'	1300.19'	18° 20' 00"	164.52'	93.37'
48 N 21° 42' 00"E	168.52'	1359.16'	18° 20' 00"	170.53'	97.42'
49 N 21° 42' 00"E	174.40'	1418.13'	18° 20' 00"	176.54'	101.47'
50 N 21° 42' 00"E	180.28'	1477.10'	18° 20' 00"	182.55'	105.52'
51 N 21° 42' 00"E	186.16'	1536.07'	18° 20' 00"	188.56'	109.57'
52 S 83° 56' 07"W	30.02'	712.28'	02° 24' 54"	30.02'	15.01'
53 S 83° 56' 07"W	25.00'	585.00'	02° 24' 54"	25.00'	12.50'
54 S 83° 56' 07"W	20.00'	457.74'	02° 24' 54"	20.00'	10.00'
55 N 10° 10' 11"W	25.47'	25.00'	89° 58' 00"	25.57'	14.93'
56 N 10° 10' 11"W	35.35'	35.00'	89° 58' 00"	35.35'	21.40'
57 N 10° 10' 11"W	45.23'	45.00'	89° 58' 00"	45.23'	27.87'
58 N 10° 10' 11"W	55.11'	55.00'	89° 58' 00"	55.11'	34.34'
59 N 10° 10' 11"W	64.99'	64.99'	89° 58' 00"	64.99'	40.81'
60 N 10° 10' 11"W	74.87'	74.87'	89° 58' 00"	74.87'	47.28'



1" = 60'

1000-180
31
80

VISTA DEL GOLF at Boca LAGO

CONRAD W. SCHAEFER CONSULTING ENGINEERS, INC.
PALM BEACH COUNTY, FLORIDA

VISTA DEL GOLF AT BOCA LAGO

DESIGNED	DRAWN	CHECKED	JOB NO.	DRAWING NO.
RW	WALDO			3100-D-2
DATE	SCALE	APPROVED	FILE NO.	SHEET OF
1-20-75	1" = 60'			2 2

THIS INSTRUMENT WAS PREPARED BY ROBERT WHIDDEN OF DAILEY-FOTORNY, INC., LAND SURVEYORS, PLANNERS, ENGINEERS, 1028 SOUTH MILITARY TRAIL, WEST PALM BEACH, FLORIDA, PHONE 965-8787.